

## LD45

### LOW GLARE INTERIOR/EXTERIOR WALL OR STEP LIGHT



## CB | RLE | R



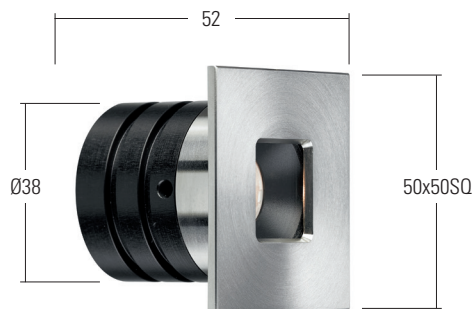
The LD45 will fit into most architectural styles, and is also available with a round bezel (see LD46). Manufactured with a machined stainless steel 316 bezel and black anodized body, these can be used for indoor and outdoor use. The compact design with the optic set back makes them ideal for steplighting. The 12° beam will wash light narrowly across steps, while the 31° beam will wash light closer to the edges of each section. Available with a choice of beam angles and LED colours.

## KEY FEATURES



- > LED and lens assembly recessed within a black anodised body for reduced glare
- > High quality machined bezel and body
- > Square and round versions available
- > Glass fixed with hidden gasket, so no unsightly glue line
- > No visible fixings. Options include spring fixing clips or O-rings and a first fix sleeve
- > Can be used for external and internal applications
- > Integral anti-wicking barrier increases protection against moisture ingress due to incorrect IP rated cable connections
- > Range of bezel finish options including stainless steel and paint finishes
- > Available with Switch, 0-10V, DMX, Dali or Mains dimmable drivers

## DIMENSIONS

For fixings and dimensions please go to page 3.



## WHITE LED ENGINE SPECIFICATION

Engine	 C1		
Beam angles	12°, 31°, 48°, 12° x 36°		
LED manufacturer	NICHIA		
Colour temperature	2200K, 2700K, 3000K, 4000K, 5000K		
Current [Rated output]	350mA [1.2W]	500mA [1.7]	750mA [2.4W]
Typical LED Circuit wattage	1.1W	1.6W	2.3W
Delivered lumens (L <sub>100</sub> )*	106	138	177
Delivered lm/Circuit W**	97	86	76
Typical LED Source wattage	1W	1.6W	2.1W
Source LED Lm	133	187	206
Source lm/W	136	129	98
Forward voltage (V <sub>100</sub> )	2.8V	2.9V	3V
CRI	93		
Colour consistency	2 SDCM		
Peak intensity	1,075 cd		
LOR	0.86		
TM30	RF93   RG100		
UGR***	48.5	49.3	50.2
BUG rating (Sideways mounted)	B0-U2-G1		
LED lifetime	L90B5 at 90,000hrs		
Applications			

This data is based on LD45-C1-700-LW27-NB

\*Lumen output data applies to all colour temperatures

\*\*LED wattage includes losses associated with using a 90% efficient driver

\*\*\*UGR values based on room parameters of 4H 8H, C70 W50 F20

## MECHANICAL

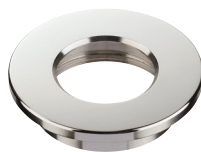
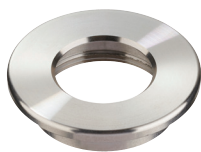
Ambient temperature	C1	-20° to 50° (350mA-700mA)
	AUS/NZ	-20°C to 25°C (350mA-500mA)
Glass	5mm thick borosilicate	
Materials	Black anodised aluminium body, Machine finish 316 stainless steel bezel (other options available)	
IP rating	IP67	
Wiring	Comes pre-wired with 2 core 100mm lead, can be specified with up to 10m at extra cost	

## ENVIRONMENTAL

TM65	Available on request	
TM66	2.7	
Repair + Refurbish	 This product is included in our Repair and Refurbish scheme. This offers customers the ability to send back products to us for repair or refurbishment to extend their life without having to buy new fittings.	
RLE (REPLACEABLE LIGHT ENGINE)	 Visit page 4 for replacement parts	

## AVAILABLE FINISHES

Please refer to our finishes guide for full details



### 316 STAINLESS STEEL

- > Marine grade 316 Steel
- > Standard machined finish
- > Extremely durable with very high corrosion resistance
- > Passivation recommended for marine environments to prevent corrosion and build up of brown stains caused by oxidation
- > Interior & exterior use

### POLISHED & PASSIVATED 316 STAINLESS STEEL

- > Marine Grade 316 Steel
- > Mirror like finish
- > Extremely durable with very high corrosion resistance
- > Passivated to extensively prolong resistance to corrosion and brown stains caused by oxidation in marine environments
- > Interior & exterior use

### FLAMED SOLID BRONZE

- > Solid Bronze
- > Hand finished Flamed Bronze unique to LightGraphix
- > Extremely durable with very high corrosion resistance.
- > Please note a natural dark patination layer will form after long term exposure to the elements, the extent of this discolouration will be dependant on its location.
- > Interior & exterior use

### PAINT FINISH - WET SPRAY

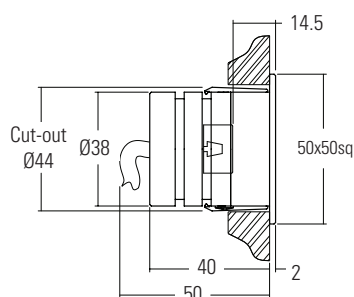
- > White (RAL 9016), Black (RAL 9005), Antique Bronze, Satin Antique Brass, Satin Brass, Anthracite Grey (7016) or any RAL colour available
- > Not recommended for footlights in high traffic areas
- > Interior & exterior use

## DIMENSIONS & FIXING OPTIONS

Dimensions in mm

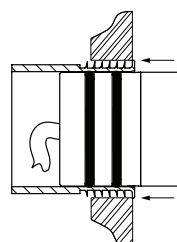
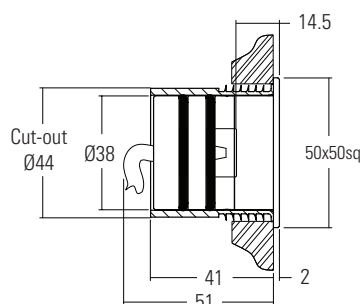
### /SC Spring clip fixing

Useful for most wall mounted applications



### /476 O-rings and sleeve

A robust and water tight method of fixing useful for wet areas



Design: Light IQ Project: Private Residence



## RLE - REPLACEABLE LIGHT ENGINES



### What is RLE

On the surface, RLE is LightGraphix's answer to the Circular economy question that is facing many industries at the moment. However for us, RLE is an ethos; a commitment that LightGraphix will factor in the principles of good circular design into all of its future product design. It allows us to offer luminaires that contain replaceable, energy-efficient light engines. This gives customers the ability to refurbish existing lighting installations rather than having to replace the entire luminaire. This will fall into two types of refurbishments: replaceable, and repairable.

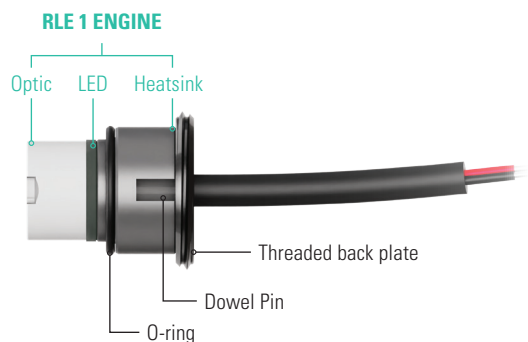
### RLE Engines

Repairs can be conducted on any site worldwide, or in our factory, with a small tool. Simply swap out the singular modular LED insert, and replace it with another, along with a new optic, which are both supplied by us. The warranty provided with the product varies based on who is performing RLE repairs. There are three types of RLE engine, categorised based on the size of the product. RLE1 is the smallest, with RLE3 being the largest.



## LD56 RLE REPLACEMENT PARTS

Please use the configurator below to specify your replacement engine and optic. If you are unsure of your original specifications, please check the label on your LightGraphix fitting, or get in touch with our sales team. Installation sheets will be supplied with the new components.



RLE Engine		LED Colour		Beam Angle		Accessories	
RLE1/							
RLE 1 ENGINE	RLE1/	Super Warm White (2200K)	/LW22	Narrow beam 16mm optic	RLE/OP-16/NB	Dowel pin for Oval beam orientation	RLE1/OP-16/DP
		Extra Warm White (2700K)	/LW27	Medium beam 16mm optic	RLE/OP-16/MB	O-ring	RLE/OR2
		Warm White (3000K)	/LW30	Wide beam 16mm optic	RLE/OP-16/WB	Threaded back plate	RLE/TBP
		White (4000K) - on request	/LW40	Oval beam 16mm optic	RLE/OP-16/OB		
		Cool White (5000K)	/LW50				

## ORDER CODES & OPTIONS

Example: LD45-C1-500 / LW30 / MB / Polished & Passivated 316 Stainless Steel / 476

Light Engine & Drive Current

LED Colour

Beam Angle

Finish

Fixing

	/		/		/		/	
--	---	--	---	--	---	--	---	--

### C1

1.2W LED at 350mA	LD45-C1-350
1.7W LED at 500mA	LD45-C1-500
2.4W LED at 700mA	LD45-C1-700

**\*AUS/NZ:**  
Add - AU - suffix to the product code e.g.  
LD45-AU-C1-350

Super Warm White (2200K)	/LW22
Extra Warm White (2700K)	/LW27
Warm White (3000K)	/LW30
White (4000K) on request	/LW40
Cool White (5000K)	/LW50
Red	/LR
Green	/LG
Blue	/LB
Amber	/LA

12° Narrow	/NB
31° Medium	/MB
48° Wide	/WB
12° x 36° Oval	/OB

	316 Stainless Steel
	Polished & Passivated 316 Stainless Steel (for marine environments)
	Flamed Solid Bronze
	WET SPRAY Silver Anodised
	WET SPRAY Antique Bronze
	WET SPRAY Satin Antique Brass
	WET SPRAY Satin Brass
	WET SPRAY Black (RAL 9005)
	WET SPRAY Anthracite Grey (RAL 7016)
	WET SPRAY White (RAL 9016)
	WET SPRAY RAL

	4A
	/SC
	/476

### Drivers

Use with 350mA, 500mA & 700mA constant current LED drivers  
We have a wide range of LED drivers available. Please see the downloads section of our website.